

NT CloudConnect™ - Enterprise Class Thermostat Control Center

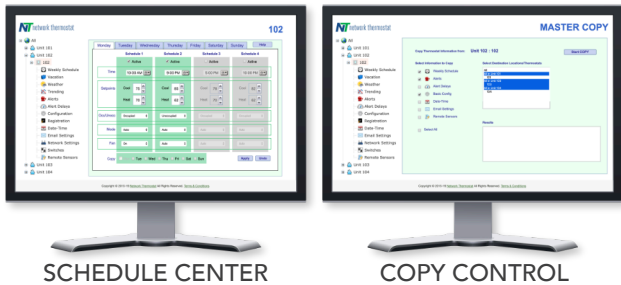
Overview

CloudConnect™ is a cloud-based enterprise class thermostat control center for NetX Wi-Fi and Ethernet thermostats. CloudConnect enables users to control an unlimited number of X-Series thermostats and an unrestricted number of Site Locations. CloudConnect is available at three feature levels: **Basic**, **Plus** and **Advanced**.



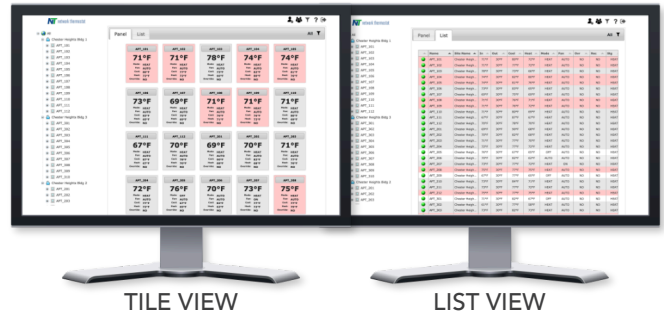
Facility Management

CloudConnect™ makes facility management a breeze. Easily copy settings, schedules, and events from one thermostat to thousands. Configure thermostat lockouts with programmable override time and temperature. Configure and monitor alerts from any computer or tablet device. The system supports mobile devices, making it easy to see, control, and check thermostats in the field.



Simple • Flexible • Powerful

www.networkthermostat.com



Cloud Dashboard

New for CloudConnect™ is our Dashboard Overview. Available for **PLUS** and **ADVANCED** subscription plans, the Dashboard Overview presents a quick snapshot of important thermostat parameters in a sortable, filterable format.

Panel / List View - Panel View displays SmartTile™ snapshot overview. List View displays details your NetX Thermostats in on simple to navigate, searchable, sortable page format.

Quick Access Links - Clicking on a SmartTile™ in Panel View takes you directly to the thermostat

Color-Coded Staging Presentation - SmartTile™ background colors display the current stage for the HVAC Unit.

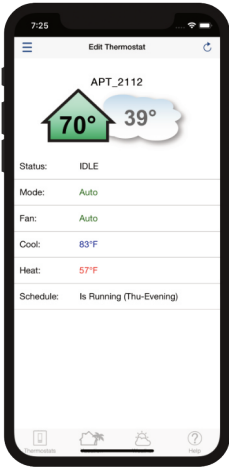
Quick Alert Highlighting - When Alert Notification is active, clicking the SmartTile™ takes a user directly to thermostat alerts page.

Features	Basic	Plus	Advanced
Works with all NetX Wi-Fi and Ethernet Thermostats	✓	✓	✓
Remotely access and control all thermostat functions	✓	✓	✓
Current Weather and 7-Day Forecasts at each Location	✓	✓	✓
Copy Schedules, Events, Alerts and Configurations to other NetX Thermostats	✓	✓	✓
Special and Calendar Event Scheduling	✓	✓	✓
CloudManager™ Upgradable	✓	✓	✓
Dashboard View with Alert Monitoring	✓	✓	✓
90 Day Graphing		✓	✓
90 Day Data Logging			✓
Sub-Metering Reports			✓

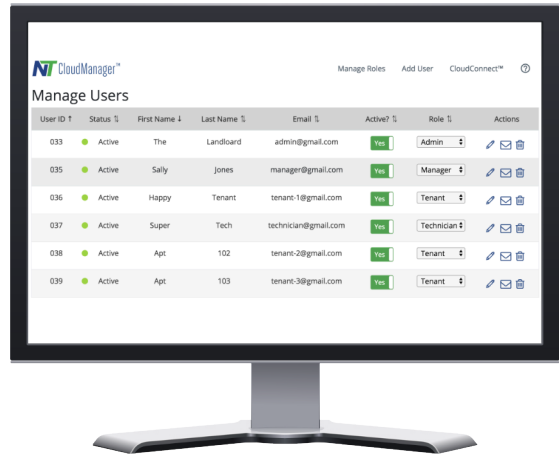


CloudManager™ - Enterprise Class User Access Control

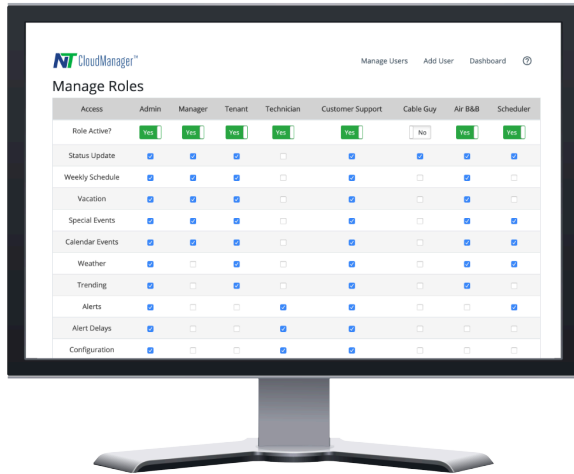
User Access



With Administrative permission, Users can control their thermostat from a mobile device or computer. What the user has access to is determined by the administrator. Setup is easy and only requires an email address. Once a user no longer needs access, the administrator simply revokes and removes the user from the system with a few mouse clicks.



MANAGE USERS VIEW



MANAGE ROLES VIEW

Administrator Control

CloudManager™ Dashboard gives you the power to grant web-based remote thermostat access to an unlimited number of tenants, contractors, and other users. You can define up to 8 different user roles, controlling what they can see and adjust and what they can't see. From a simple-to-use dashboard, administrators can organize thermostats into "Virtual Groups" making it a breeze to manage all thermostats at a single property or a nationwide portfolio!

Submetering Support

The NetX Platform provides reliable deep-data analysis for runtimes and all thermostat operations. The system creates sub-metering reports for tenant billing based on actual HVAC usage for heating and cooling runtimes. It is compatible with all major tenant billing platforms. Subject to local and state public utility regulation.

Contact Us:

PHONE: (972) 580-8001

EMAIL: sales@networkthermostat.com



Save Time • Save Energy • Save Money

